

OUTDOOR RECREATION

RENTALS

24 Hr. Rentals

Weekend Specials (Friday—Monday)

UTAH HOUSE VACATION RENTAL

Minimum 3 Night Stay, Sleeps 7

\$110 Nightly \$700 Weekly \$2600 Monthly

\$150 Pet Fee (Cats & Dogs Only)

TRAVEL TRAILERS—GULF STREAMS

(No smoking or Pets allowed)

Sleeps 4/5 \$125 Nightly \$315 Weekend

Sleeps 7 \$150 Nightly \$400 Weekend

STORAGE/VEHICLE

10 x 8 Enclosed Storage Unit \$60

RV/Vehicle Pull Through \$42

RV/Vehicle Back In \$36

VEHICLE RESALE LOT

Motorcycle \$15

Car/Truck \$25

Boat/Camper/RV/Trailer \$35

SPORTSMAN'S CENTER RV CAMPGROUND

\$20 Nightly \$400 Monthly

PICNIC & CAMPING SITES

LOWER OR MIDDLE GARDEN CANYON

LAKESIDE PARK

\$40 Pavilion Rental

LOWER GARDEN TENT CAMPING

\$5 per Tent/Night

CAMPING GEAR

24 Hr. Weekend

| | | |
|-----------------------|------|------|
| Tent (2 person) | \$10 | \$20 |
| Tent (4-6 person) | \$15 | \$30 |
| Tent (8 person) | \$25 | \$50 |
| Camping Chairs | \$3 | \$6 |
| Backpack (hiking) | \$5 | \$10 |
| Camp Stove (2 burner) | \$5 | \$10 |
| Canopy (12x12) | \$15 | \$30 |
| Grill (Webber) | \$5 | \$10 |
| Cooking Set | \$3 | \$6 |
| Fishing Pole | \$3 | \$6 |
| Ice Chest (55 quart) | \$5 | \$10 |
| Ice Chest (100 quart) | \$10 | \$20 |
| Water Jug | \$2 | \$4 |
| Lantern | \$2 | \$4 |
| Shower (portable) | \$3 | \$6 |
| Sleeping Bag | \$8 | \$16 |
| Sleeping Cot | \$13 | \$26 |
| Sleeping Pad | \$2 | \$4 |
| Turkey Fryer | \$8 | \$16 |
| Water Mist Fan | \$10 | \$20 |

FLAT BED TRAILER

24 Hr. Weekend

| | | |
|--------------|------|------|
| 5x10 Trailer | \$30 | \$60 |
|--------------|------|------|

PICNIC GAMES

24 Hr. Weekend

| | | |
|-----------------------|------|-------|
| Jenga Blocks | \$7 | \$14 |
| Corn Hole | \$7 | \$14 |
| Furious Fowl | \$15 | \$30 |
| Volley Ball, Football | \$2 | \$4 |
| Tug-Of-War | \$5 | \$10 |
| Dunk Tank | \$80 | \$160 |
| Horse Shoes | \$7 | \$14 |
| Spikeball | \$7 | \$14 |

PARTY SUPPLIES

24 Hr. Weekend

| | | |
|-------------------------|--------|-------|
| Grill Trailer | \$30 | \$60 |
| Flat Top Grill | \$30 | \$60 |
| Chairs | \$2 | \$4 |
| Projector | \$20 | \$45 |
| Projector Screen | \$15 | \$35 |
| Table (6 foot & 8 foot) | \$6.50 | \$13 |
| Santa Suits | \$20 | \$40 |
| Generator (2000 Watt) | \$40 | \$80 |
| (3000 Watt) | \$45 | \$90 |
| (4000 Watt) | \$50 | \$100 |

BOUNCERS

Ask about all we have to offer! Or look on

MWR Outdoor Recreation and Rentals

Facebook Page!

\$75-\$300 24 Hr. Rental

\$150-\$600 Weekend Rental

BICYCLES

(Rental includes a helmet)

Road, Mountain & Cyclocross

24 Hour \$25

Weekend \$50

WATER CRAFT

(PFD is included)

24 Hr. Weekend

| | | |
|----------------|------|-------|
| Kayak (Single) | \$25 | \$50 |
| Kayak (Double) | \$35 | \$70 |
| Kayak Trailer | \$50 | \$100 |
| Paddle Boards | \$30 | \$60 |
| Canoe | \$30 | \$60 |
| Tube (Single) | \$8 | \$16 |
| Tube (cooler) | \$8 | \$16 |

BATTING CAGES

Open during daylight hours.

\$1 for 10 pitches

No coin machine on site.

FREE

Helmet and Bat Rentals at
MWR Outdoor Recreation



THE HIGH ROPES CHALLENGE COURSE

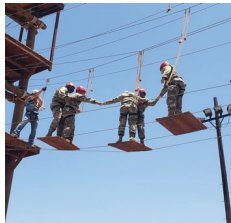
Where your unit, club, co-workers,
or friends learn camaraderie and
challenge by choice! Ask us how
we can build teamwork within your
group! Minimum 8 people

520-533-6708

WARRIOR ADVENTURE QUEST (WAQ)

Unit reset program. Contact us for
more information.

520-533-6708



PAINTBALL

\$20 Paintball Rental Package

\$10 Field Fee without package

\$50 Paintball Box

\$15 Paintball Bag

(House Paint ONLY)

SKEET/TRAP

\$7 per round of clays

ARCHERY

\$12 Archery Package

\$3 Range Fee

RANGE 3

Open 0900-1400 Sat. & Sun.

\$5 Range Fee



MWR
rents



Bldg. 70914

Open: Monday - Friday

10 AM to 6 PM

Closed: Saturday & Sunday

520-533-6707/533-6708



SPORTSMAN'S
CENTER
Bldg. 15423
Sat. & Sun.

